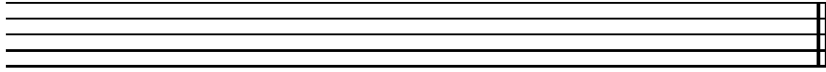


The Staff, Clefs and Note Names

The musical Staff is a series of five parallel lines on which musical notes are written.



Each line, and each space between two lines, represents a different note. The higher a note is positioned on the staff, the higher its pitch will sound.

A clef is placed at the beginning of each staff. The most commonly used clefs are the *Treble Clef* and *Bass Clef*.

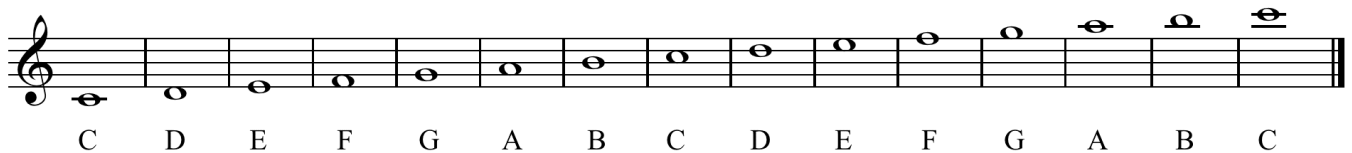
The Treble Clef, which is a stylized form of the letter G, indicates the position of the note G on the staff.



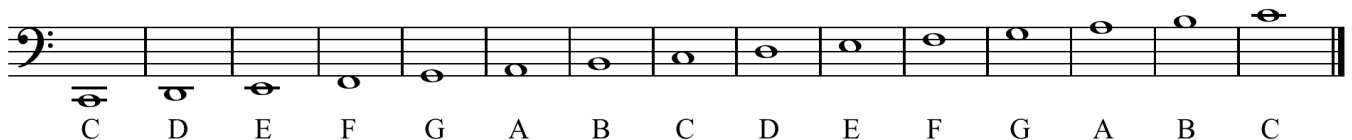
The Bass Clef, which is a stylized form of the letter F, indicates the position of the note F on the staff.



Here are the notes in the Treble Clef:



Here are the notes in the Bass Clef:



Important:

Ledger Lines are small lines that indicate notes above and below the staff.