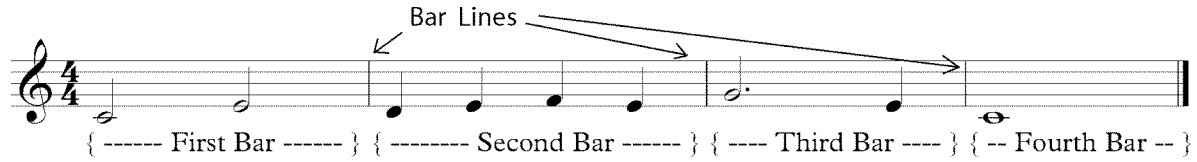


Bar Lines and Measures

Bar lines divide music into bars, which are also called measures.



In the example above, there are three bar lines that divide the piece into four measures. The measures (or bars) are labeled underneath.

At the end of the line of music is a double bar line. A double bar line indicates the end of a piece.

Important:

The top number of the time signature is 4. Notice that the number of beats in each measure adds up to 4, in order to match the time signature.